

# TiMOTION ACCESSORIES

FOR COMPLETE ELECTRIC  
ACTUATION SYSTEMS



# SUMMARY

---

• TiMOTION, complete turnkey actuator solutions manufacturer	1
--	---

---

► <b>Accessories for medical electric actuation systems</b>	<b>2</b>
---	----------

• Emergency stop and call buttons	2
-----------------------------------	---

---

• Lighting devices	2
--------------------	---

---

• Wireless receiver	3
---------------------	---

---

• Locking box and pressure sensor	3
-----------------------------------	---

---

• Anti-collision systems	3
--------------------------	---

---

• Junction boxes, Y cables and cable reel	4
---	---

---

• Accessories for medical electric actuation systems	5
--	---

---

► <b>Accessories for comfort electric actuation systems</b>	<b>6</b>
---	----------

• Anti-collision systems	6
--------------------------	---

---

• Lighting devices	6
--------------------	---

---

• Junction boxes, Y cables and cable reel	7
---	---

---

• Massage motors	7
------------------	---

---

• Built-in USB ports and induction charger	8
--	---

---

• Wireless receivers	8
----------------------	---

---

• Accessories for comfort electric actuation systems	9
--	---

---

► <b>Start your project!</b>	<b>10</b>
------------------------------	-----------

• About TiMOTION	11
------------------	----

---



# INTRODUCTION

## TiMOTION, complete turnkey actuator solutions manufacturer

For more than 15 years, TiMOTION has been designing and manufacturing **electric actuation systems to automate industrial, medical, and comfort equipment**. As partners to our customers, we provide them with complete solutions and a **high level of customization** to meet their specific project needs.

This customization service is allowed by our vertical integration. We develop new products at our customers' request to meet their unique needs and adapt each of our products to their specific requirements: **load capacity, cable length, speed, programming, retracted length, stroke, control interface, IP protection, and attachments**.

This service also includes customizing the electric actuation systems and the many accessories we manufacture that **are compatible with our electric linear actuators**:

- Emergency stop and call buttons
- Locking box and pressure sensor
- Junction boxes, Y-cables and cable reel
- Anti-collision systems
- Lighting devices
- Integrated USB ports and induction charger
- Wireless receivers
- Massage motors

This white paper will detail all the complementary devices you'll need to help finalize your project.



# ACCESSORIES FOR MEDICAL ELECTRIC ACTUATION SYSTEMS

Accessories are essential to enhance your product offerings. They allow the design of more functional equipment for nursing staff and bring more comfort and safety to patients.

## EMERGENCY STOP AND CALL BUTTONS

Emergency stop and call buttons are medical devices designed to complement your electric linear motion systems.

So, you don't have to worry about these essential elements when designing your medical equipment as they can already be integrated into your solution.

Emergency stop buttons allow for the immediate shutdown of devices in an emergency.

The call button is an emergency alert button for caregivers. It is compatible with hand controls that have a «patient call» function and can be equipped with an external battery for added versatility.



TEB

- Emergency stop button



TEB2

- Emergency stop button
- IP66 protection



TNC

- Calls caregivers
- Emergency call receiver
- Built-in battery and USB port available

## LIGHTING DEVICES

Lighting devices provide more comfort and safety for your users.

By switching on automatically, under-bed lighting will allow patients to move around at night safely.

It will reduce the risk of falls and bring peace of mind to people with mobility difficulties.



TBL

- Under-bed lighting
- Low energy consumption



TBL2

- Under-bed lighting
- With PIR motion sensor



## WIRELESS RECEIVER

Compatible with our wireless hand controls, the TRF2 receiver allows remote control of your equipment and, therefore, an easier use

Wireless solutions offer a sleeker design with no visible cables and reduce the risk of falls by eliminating the cable line that can drag on the floor.



### TRF2

- Wireless receiver
- Maximum distance: 5~7m
- Wireless receiver: 2.4G, Bluetooth receiver

## LOCKING BOX AND PRESSURE SENSOR

When a hospital bed needs to remain configured in a specific position for medical reasons, it can be equipped with a locking box.

This box will allow the electric actuators to be locked in a particular position to prevent the patient, or any other person outside the medical profession, from adjusting the bed. This device can be integrated into any kind of medical application.

The pressure sensor is another medical safety device that detects and alerts the nursing staff when patients leave their beds. An acoustic signal is then triggered via the compatible hand controls.



### TLB

- Locking box
- Designed to lock 4 motors or accessories
- For nurses and attendants' safety



### TPS

- Pressure sensor
- Detects if the patient leaves the bed
- IP66 protection

## ANTI-COLLISION SYSTEMS

Anti-collision systems are used in the design of height-adjustable equipment.

They allow the electric device to be stopped in the event of contact with a foreign element (object, person). Thus, they protect the equipment and its electric devices from any material damage.

They can be found in particular on medical worktops, laboratory benches, washbasins, and height-adjustable toilets. They are compatible with all other types of medical equipment.



### TCS1

- Anti-collision sensor
- Hardware-based solution
- Plug and play



### TSS

- Safety strip
- Customizable length/number of sections



### TSS2

- Safety strip
- Customizable length/number of sections
- Medical certification





## JUNCTION BOXES, Y CABLES AND CABLE REEL

Junction boxes and Y cables allow you to connect multiple electric actuators and/or hand controls to your systems.

They are ideal when your applications require more complex solutions with multiple actuators and independent control needs. The cable reel eases the control box's power cable management and eliminates the presence of cables on the ground that could lead to a fall.



**TJB3**

- Junction box
- Designed for 2 hand controls



**TJB4**

- Junction box
- Designed to process load cell signals



**TJB5**

- Junction box
- Connection for 4 motors or accessories



**TJB11**

- Junction box
- Converts Hall signal to POT
- IP54 protection



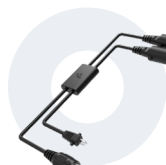
**TYC**

- Y cable
- Compact design
- Designed for 2 hand controls or motors



**TYC2**

- Y cable
- Designed for 2 hand controls
- IP66W protection



**TYC3**

- Y cable
- Designed for several types of plugs



**TCR**

- Angle of AC plug: 90° or 180°
- Cable reel
- Color: Black or grey



# ACCESSORIES FOR **MEDICAL ELECTRIC ACTUATION SYSTEMS**



TBL2



TLB



TNC



TRF2



TPS



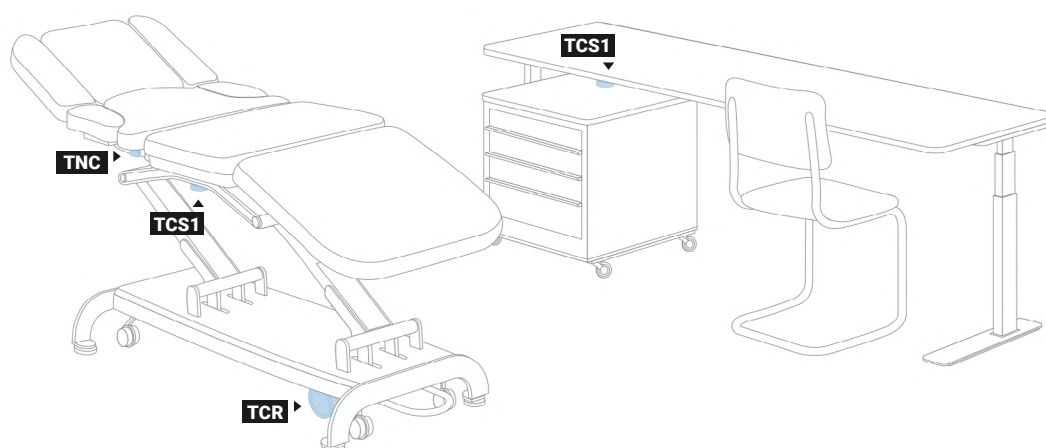
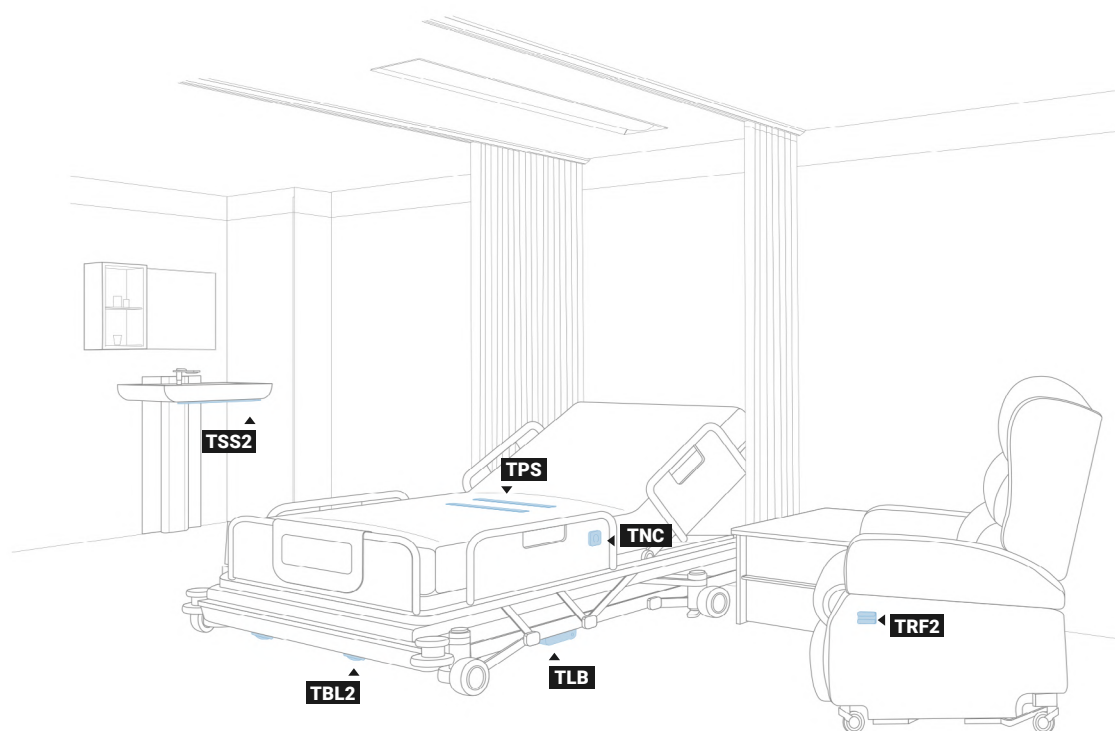
TCR



TCS1



TSS2



# ACCESSORIES FOR COMFORT ELECTRIC ACTUATION SYSTEMS

Accessories are critically important for the enhancement of your product offering. They allow the design of more versatile and functional equipment and provide more comfort and safety for users.

## ANTI-COLLISION SYSTEMS

Anti-collision systems are used in height-adjustable equipment.

They allow the electric device to be stopped in event of contact with a foreign element (object, person). They protect the equipment and its electric devices from any material damage.

They can be found particularly on adjustable worktops (kitchen, office, sinks, etc.), wall-mounted furniture, and built-in televisions.



**TCS1**

- Anti-collision sensor
- Hardware-based solution
- Plug and play



**TSS**

- Safety strip
- Customizable length/number of sections



**TSS2**

- Safety strip
- Customizable length/number of sections



**TRL1**

- LED reading light
- Elegant and compact design
- Flexible gooseneck

## LIGHTING DEVICES

Lighting devices bring more comfort and safety to your users.

For example, they allow the integration of a reading light into your equipment for greater functionality. By switching on automatically, under-bed lighting will also make it safer for users to move around at night.

It will reduce the risk of falls and bring greater peace of mind to those with mobility difficulties.



**TBL**

- Under-bed lighting
- Low energy consumption



**TBL2**

- Under-bed lighting
- With PIR motion sensor





## JUNCTION BOXES, Y CABLES AND CABLE REEL

Junction boxes and Y cables allow you to connect multiple electric actuators and/or hand controls to your systems.

They are ideal when your applications require more complex solutions with multiple actuators and independent control needs. The cable reel eases the control box's power cable management and eliminates the presence of cables on the ground that could lead to a fall.



**TJB2**

- Junction box
- Designed for 2 motors and 2 hand controls
- Compact design



**TJB10**

- Junction box
- Designed for 2 motors and 1 hand control



**TYC**

- Y cable
- Compact design
- Designed for 2 hand controls or motors



**TYC2**

- Y cable
- Designed for 2 hand controls
- IP66W protection



**TYC3**

- Y cable
- Designed for several types of plugs



**TCR**

- Angle of AC plug: 90° or 180°
- Cable reel
- Color: Black or grey

## MESSAGE MOTORS

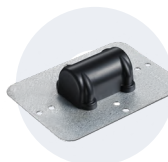
Message motors contribute a real plus to domestic or professional chairs.

Users always appreciate them as they offer a true moment of relaxation. Message motors can be found in domestic chairs, but also in treatment chairs (spa, hairdresser), or in waiting areas such as shopping centers, train stations, and airports. They can also be used in relaxation beds.



**TMM**

- Message motor
- 12V DC or 24V DC
- For adjustable beds



**TMM2**

- Message motor
- 12V DC
- For recliners



**TMM3**

- Message motor
- 12V DC or 24V DC
- For recliners



**TMM4**

- Message motor
- 12V DC or 24V DC
- For adjustable beds



## BUILT-IN USB PORTS AND INDUCTION CHARGER

Today, most people have a smartphone that requires daily battery charging.

What could be more functional than a USB port built into your equipment? These devices will make charging any electric device easier and more accessible.

For even more functionality, we also offer an induction charger that can be integrated into any work surface, allowing wireless charging (for any compatible device). This way, you don't have to worry about recharging or risking battery failure if you forget your phone charger.



### TFA1

- USB charger
- 2 USB ports
- For recliners and desks



### TFA3

- USB charger
- 2 USB ports
- For height-adjustable desks



### TWC

- Wireless charger
- Charger type: Qi (induction)

## WIRELESS RECEIVERS

Compatible with our wireless hand controls, TRF receivers allow for remote control of your equipment and, therefore, an easier use.

Wireless solutions offer a sleeker design with no visible cables and reduce the risk of falls by eliminating cable lines lying around on the floor.



### TRF

- RF receiver
- Maximum distance: 5m
- LED indication



### TRF2

- Wireless receiver
- Maximum distance: 5~7m
- Wireless receiver: 2.4G, Bluetooth receiver



## ACCESSORIES FOR **COMFORT** **ELECTRIC ACTUATION SYSTEMS**



TFA1



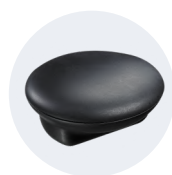
TCS1



TSS2



TRF



TMM3



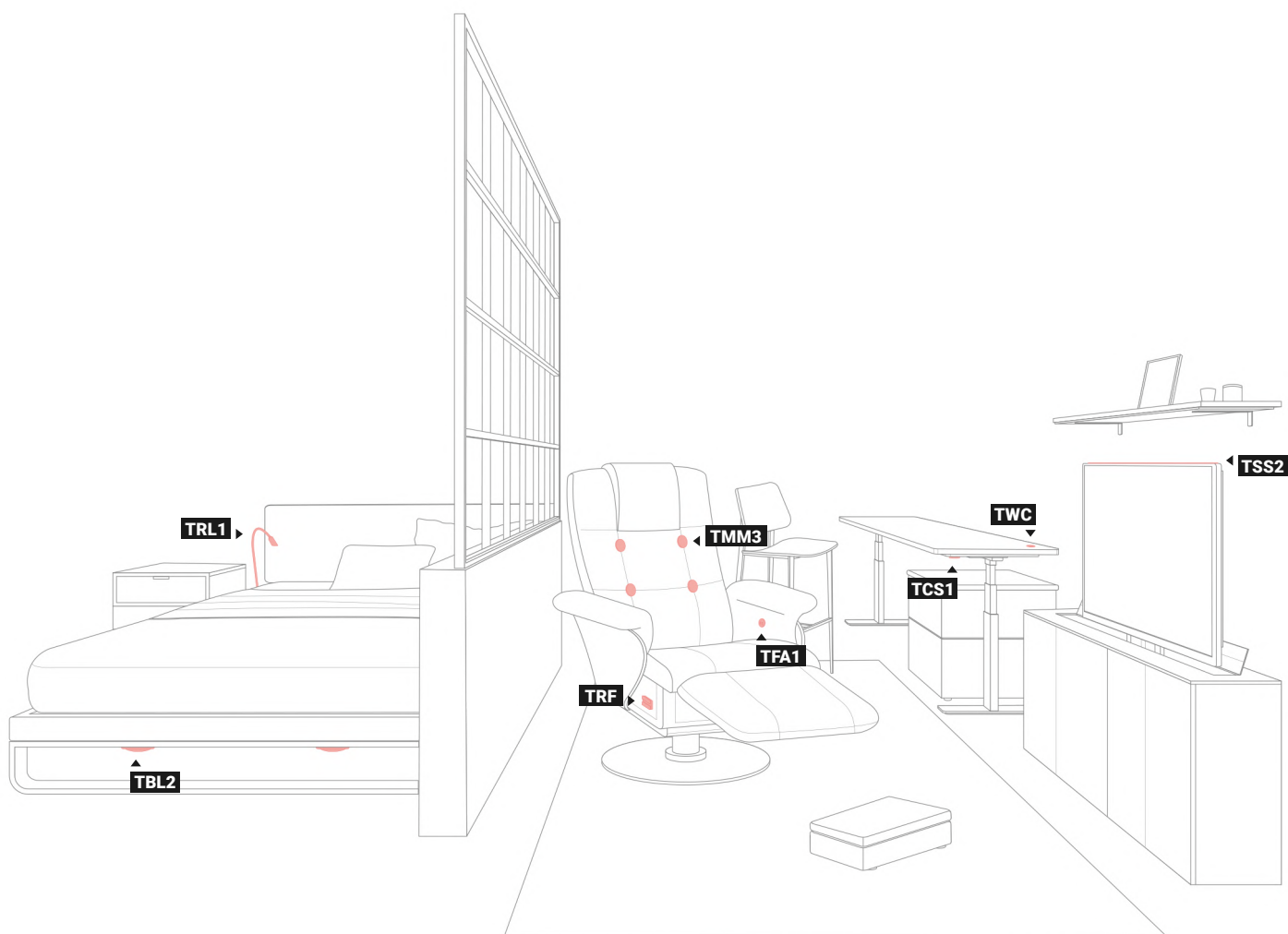
TWC



TBL2



TRL1





# START YOUR PROJECT!

---

**TiMOTION offers a wide range of accessories that can complement your systems. They improve the overall performance of your solutions, make them easier to use, bring more functionalities to users, and add real value to your equipment.**

In other words, choosing the right accessories allows for the design of customized solutions tailored to the specific needs of your applications.

Would you like more information about our products, or would you like project support?

**Please contact your local sales department!**





# ABOUT TIMOTION

Founded in 2005, **TIMOTION** was born from the passion of improving the lives of others. We offer complete and customizable equipment automation solutions: electric linear actuators, electric lifting columns, control boxes, batteries, power supplies, handsets, and accessories; for 4 major markets: **Industrial, Care, Comfort & Ergo**. TIMOTION has over **2 500 employees** working together throughout the world in **14 international subsidiaries** and sales offices, and **9 manufacturing facilities**.



**16 Years** of business industry experience



**14 corporate offices**



**800 patents**



**24 distributors**  
all around the world



**9 manufacturing facilities**



## Our vision?

Anticipate tomorrow's world and offer even more **innovative electric solutions** to make equipment ergonomic and adaptable to fit everyone's needs. Our multicultural team finds its strength in commitment, hard work and **great team collaboration**.

## Our mission?

Put our "know-how" experience to work in our customers' favor, providing them a **tailor-made service** reaching out to wherever they are located.





**Taiwan & China**

+886 2 2219 6633  
sales.tw@timotion.com

**USA**

Toll Free (855) 235 1424  
sales.us@timotion.com

**Europe**

+33 (0)1 74 82 50 51  
sales.eu@timotion.com

**Korea**

+82 31 745 1060  
sales@timotion.co.kr

**Japan**

+81 6 6713 1188  
sales.jp@timotion.com

**Australia**

+61 3 8725 0331  
sales.tw@timotion.com

**Russia**

+7 (921) 406-23-34  
sales.cis@timotion.com

**Latin America**

+55 (11) 5081 5011  
sales.la@timotion.com

