

20211222
User Manual

Hand Control Programming- TDH18P



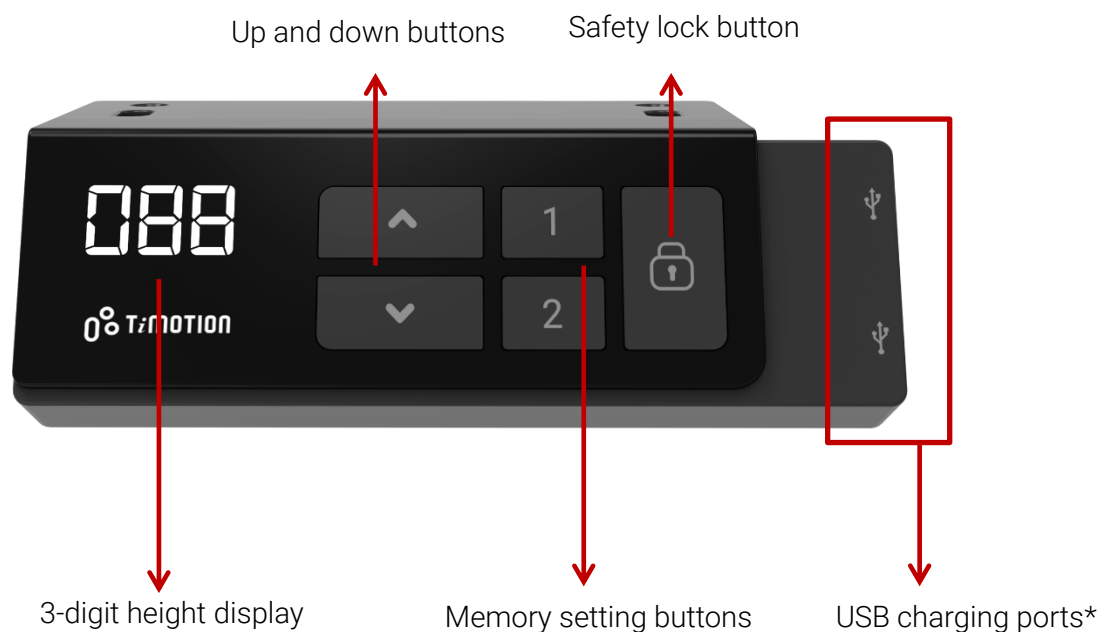
Contents

Contents	2
Disclaimer	3
1. User Interface Guide.....	4
2. Reset.....	5
3. Adjusting the Height.....	6
4. Setting the Memorized Position	6
5. Setting the Upper and Lower Height Limit	7
6. Presetting the Desk Starting Height	8
7. Lock / Unlock	8
8. Switching Metric and Imperial Unit	9
9. Restore Factory Setting	10
10. Error Codes	10
11. Power Saving Function - Waking Up the Control	11
12. Setting the Sit-Stand Reminders (Optional)	11

Disclaimer

This user manual is ONLY for generic TiMOTION products. Manufacturers may have altered product settings causing them to differ from this user manual. Please contact the manufacturer for a revised manual if the product settings are different than this manual.

1.User Interface Guide



*USB charging ports: For charging electronic devices

*OUTPUT 5V/1.2A only applies to $\leq 1000\text{mm}$ cable length. The actual charging efficiency will vary depending on final handset specifications and device(s).

2.Reset

1. Simultaneously press ▲ and ▼ for 3 seconds. Continue pressing the buttons until both columns are in the lowest position. When finished with the reset, the control box will make a “beep” sound and the buttons can be released.



2. When finished with the reset, the display will show the starting height.
3. Users must conduct a reset when operating the desk for the first time.

3.Adjusting the Height

Press ▲ or ▼ button until the desk reaches the preferred height.

4.Setting the Memorized Position

TDH18P supports a maximum of 2 memory positions.

How to memorize a position:

1. Adjust the desk to the desired height.
2. Press the preferred memory button (1 or 2), with either ▲ or ▼ for 2 seconds. Once the display shows P1 or P2, the position is memorized.
3. Press (and hold) button 1 or 2 to move the desk to the memorized position. ([Note 1](#))



[Note 1](#): It depends on the control box setting whether or not the memory button needs to be held.

5. Setting the Upper and Lower Height Limit

A. Setting the upper height limit:

- (1) Adjust the desk to the preferred upper height limit.
- (2) Press ▲ and ▼ buttons together for less than 3 seconds, holding ▲ and release ▼ button. (Note 2)
- (3) Re-press ▼ for more than 3 times at a slow pace.
- (4) A beeping sound will notify you that the process has been completed.

B. Disable the upper height limit:

- (1) Move the desk to the upper height limit being set.
- (2) Repeat instructions #2~4 above to disable the upper limit setting.

C. Setting the lower height limit:

- (1) Adjust the desk to the preferred lower height limit.
- (2) Press ▲ and ▼ buttons together for less than 3 seconds, holding ▼ and release ▲ button. (Note 3)
- (3) Re-press ▲ for more than 3 times at a slow pace.
- (4) A beeping sound will notify you that the process has been completed.

D. Disable the lower height limit:

- (1) Move the desk to the lower height limit being set.
- (2) Repeat instructions #2~4 above to disable the lower limit setting.

Note 2: Some control boxes may not support setting the upper and lower height limit functionality.

Note 3: More than 3 seconds will direct to "Reset" mode.

6. Presetting the Desk Starting Height

- (1) Press ▼ button until the desk reaches its lowest position and then release ▼ button. Re-press ▼ button again for 5 seconds and the digital display will flash for 10 seconds.
- (2) Adjust the starting height number with the ▲ or ▼ button.
- (3) After 10 seconds, the display will stop flashing and this will confirm that you have successfully set the starting height.

7. Lock / Unlock

- (1) Lock: Press the “lock” button for one second or do not touch any buttons for 20 seconds, then the image will be shown on the display to indicate that the lock was completed successfully (as below image).
- (2) Unlock: Hold the “lock” button for 3 seconds to unlock the hand control.



8. Switching Metric and Imperial Unit

- (1) Press memory button 1, 2 and **Lock** buttons for 5 seconds.
- (2) The digital display will show **"C-I"**. If no further instruction is input within 5 seconds, the system reverts to normal operation mode.



- **How to choose a metric unit**

Press button 1, the digital display will show **"C"** to stand for centimeter.

- **How to choose an imperial unit**

Press button 2, the digital display will show **"I"** to stand for inch.

9. Restore Factory Setting

- (1) Refer to Chapter 2-Reset: after the “beep” sound, press ▲ and ▼ buttons together for 15 seconds, the control box will twice make a “beep” sound.
- (2) The settings below will restore to the original factory settings:
- Memorized position
 - Desk starting height
 - Upper and lower height limit
 - T-touch or TCS1 sensitivity

10. Error Codes

The digital display shows the error codes below to suggest the issues that users may encounter during the operation. [\(Note 4\)](#)

Error code	Descriptions
000	Resetting
E00	Not reset completely
E01	Overuse protection
E02	Unbalance protection
E03	Anti-collision
E04	T-touch Protection
E11	M1 Motor over-current protection
E12	M2 Motor over-current protection
E13	M3 Motor over-current protection
E21	No Hall sensor from M1
E22	No Hall sensor from M2
E23	No Hall sensor from M3
E31	No current from M1
E32	No current from M2
E33	No current from M3

[Note 4: Some control boxes may not support this function.](#)

11. Power Saving Function - Waking Up the Control

- The digital display automatically turns off if no buttons are pressed within 25 seconds. Press any button to light up the display again.
- The system goes into <0.1W standby mode (Note 5) if no buttons are pressed within 30 seconds. Long pressing any button will wake up the system and show desk height on the digital display.

Note 5: It depends on the control box whether it will support 0.1W standby mode or not.

12. Setting the Sit-Stand Reminders (Optional)

This is an optional function for users who want to set up a sit or stand notification while changing posture with TDH18P. Press and hold memory buttons 2 and 3 for 3 seconds to enter the setting mode. The default value is no notification.



Note: The TDH18P should be ordered with the buzzer option to have this function.

A. About the reminder settings:

There are 6 reminder notification types that alternate between sitting and standing positions. The reminder time is a 60-minute cycle.

3-digit display	Definitions
OFF	No reminders (Default)
H10	Sitting for 10 minutes; standing, 50 minutes.
H20	Sitting for 20 minutes; standing, 40 minutes.
H30	Sitting for 30 minutes; standing, 30 minutes.
H40	Sitting for 40 minutes; standing, 20 minutes.
H50	Sitting for 50 minutes; standing, 10 minutes.

B. Operation:

Press ▲ or ▼ to switch between reminder settings.

- Press ▲ to switch from low to high level : OFF→H10→H20…etc.
- Press ▼ to switch from high to low level : OFF→H50→H40…etc.

Note: When users select the notification type required, leave the buttons for 5 seconds, then the hand control defaults back to normal operation mode, and the sit or stand notifications will be set.

C. Buzzer and display:

Please see the buzzer and display operations below once the sit/stand notifications have been set.

♦ Change to standing position:

Buzzer: The buzzer will beep from slow to fast 5 times, notifying the user to stand.

Display: It will show □□□ up and down (see the image below)



- ♦ Change to sitting position:

Buzzer: The buzzer will beep from fast to slow 5 times, notifying users to sit.

Display: It will show □□□ up and down (see the image below)



Note: Press any button to stop the display for reminders.