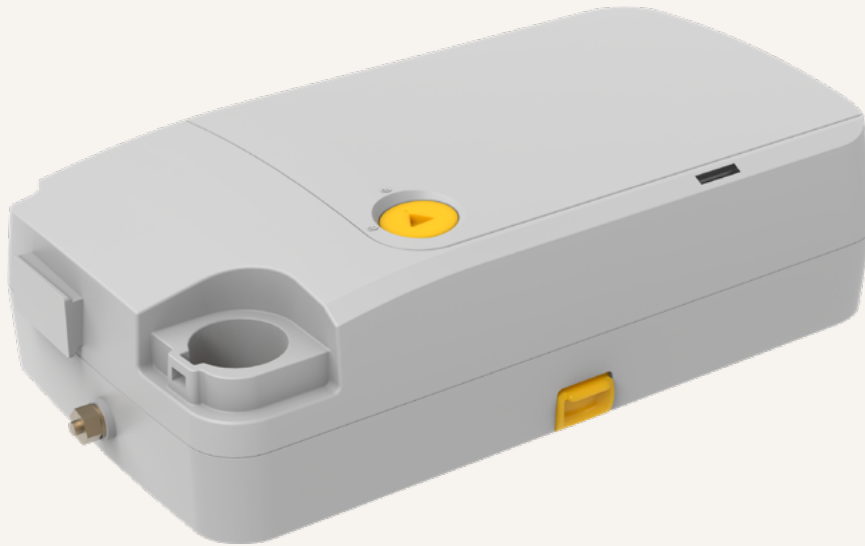


TC28

series



Product Segments

• Care Motion

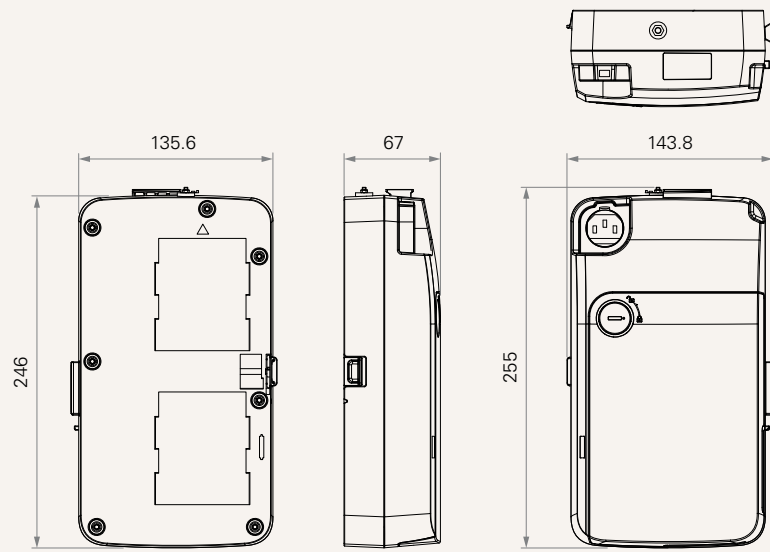
The TC28 is a new control box specifically designed for medical applications. An integrated 350W power supply provides industry leading performance and power, making it suitable for a wide array of healthcare applications. It supports up to 5 motors (4 motor synchronized movement), and 1 to 2 controllers such as hand pendants and foot switches. With an IP rating of up to IP66W, the TC28 is ideal for the most demanding of medical environments. The TC28's innovative modular design allows for effortless quick-mount installation. Additionally, the TC28 is compatible with the TBB10, featuring improved power saving functionality.

General Features

Number of motors	1~4
Number of controls	1~2
Max. output	16A, 350W
IP rating	IP66W
Back-up battery	TBB10 (Optional)
Options	Wireless support
Input voltage	100~240VAC
Built-in transformer type	SMPS
Plug support	EU, USA, AUS, UK, or JPN
Certificate	IEC60601-1, IEC60601-1-2
Color	Black or grey
Operational temperature range	+5°C~+45°C
Modular design (with TBB10) for easy, quick-mount, installation	
Power saving (with TBB10)	

Drawing

Standard Dimensions
(mm)



Input Voltage	4 = 100~240VAC			
Transformer	R = SPM-150M; maximum output current 16A. With Harmonic solution See page 4 S = SPM-120-C; With Harmonic solution			
MCU	1 = Full Bridge for 4 Motor			
Wireless Function	0 = Without	1 = 2.4G RF	2 = 2.4G BT	
Number of Actuators	1 = 1	2 = 2	3 = 3	4 = 4
Number of Controls	1 = 1	2 = 2		
Channel for TBB	0 = Without	1 = With		
Buzzer	0 = Without	1 = With		
Grounding	3 = On AC cable			
AC Plug	1 = EU 2 = US	3 = AU 4 = UK	5 = JP	
AC Plug Angle	1 = 90°	2 = 180°		
AC Outlet Connector Type	1 = 90°	2 = 180°		
AC Cable Length (mm)	0 = Without	3 = Straight, 2000	4 = Straight, 4000	
Cord Buckle	0 = Without			
Color	2 = Pantone 428C			
Fixation	1 = On the bed frame			
Cover Lock	1 = “—” type			
IP Rating	1 = IP54	2 = IP66	3 = IP66W	

Transformer

CODE	Transformer Type	External TP	Output power	Working current	Maximum current
R	SPM- 150M	N/A	350W	12A	16A, 350W
S	SPM-120-C	N/A	200W	8A	9A, 200W

Terms of Use

The user is responsible for determining the suitability of TiMOTION products for a specific application. TiMOTION products are subject to change without prior notice.