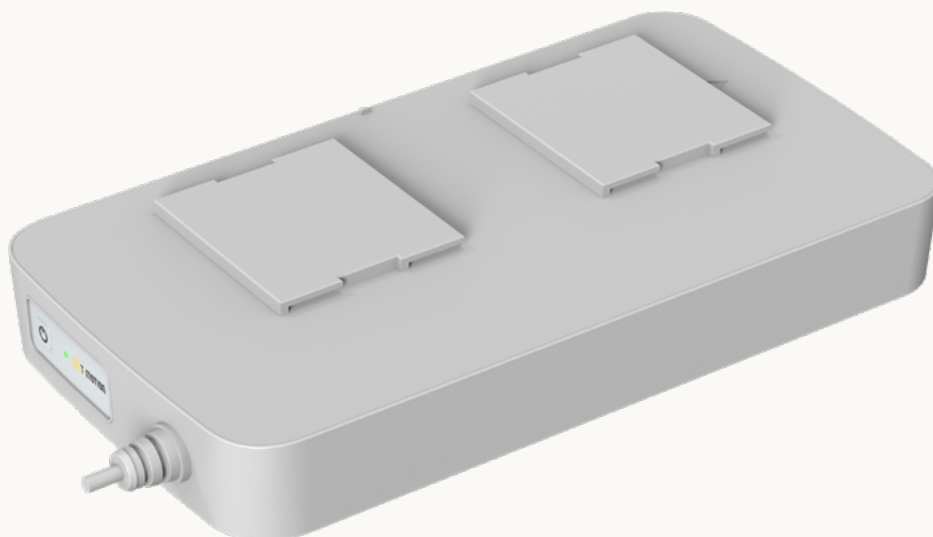


TBB10

series



Product Segments

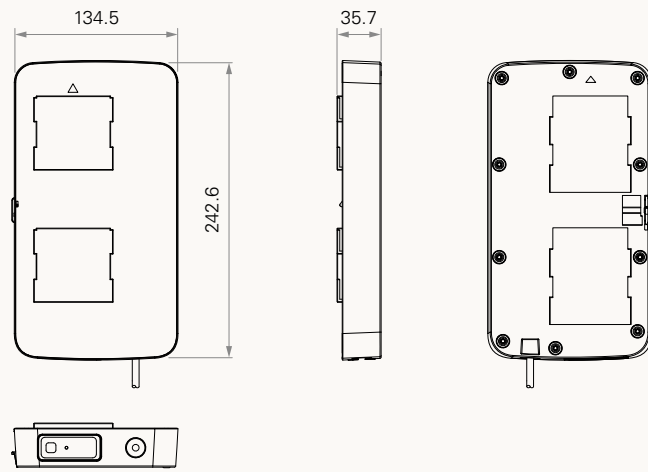
• Care Motion

General Features

Battery type	Lithium
Capacity	25.2V DC / 2500mAh
Discharging voltage	25.2V DC
Charging voltage	30~36V DC
Max. output current	15A
Charging current	1A
Color	Grey
IP rating	IP66W
Certificate	IEC60601-1, ES60601-1
Operational temperature range	+5°C~+45°C
Quick-mount installation design	
LED indicator and buzzer for battery capacity status	

Drawing

Standard Dimensions
(mm)



Capacity	1 = 2.5Ah / 15A / 25.2V DC			
Battery Capacity Indicator	1 = With			
Color	2 = Pantone 428C			
Logo	0 = Without	1 = TiMOTION		
Buzzer	1 = With			
Cable Length (mm)	1 = Straight, 300			
IP Rating	0 = Without	1 = IP54	2 = IP66	3 = IP66W
Connector	1 = Molex 4PIN, 90°			